

DISCLOSURE POLICY: Everyone in a position to control the content of this educational activity will disclose to the CME provider and to attendees all relevant financial relationships with any commercial interest.

The University of Iowa prohibits discrimination in employment, educational programs, and activities on the basis of race, creed, color, religion, national origin, age, sex, pregnancy, disability, genetic information, status as a U.S. veteran, service in the U.S. military, sexual orientation, gender identity, associational preferences, or any other classification that deprives the person of consideration as an individual. The university also affirms its commitment to providing equal opportunities and equal access to university facilities. For additional information on nondiscrimination policies, contact the Director, Office of Equal Opportunity and Diversity, the University of Iowa, 202 Jessup Hall, Iowa City, IA, 52242-1316, 319-335-0705 (voice), 319-335-0697 (TDD), diversity@uiowa.edu

Individuals with disabilities are encouraged to attend all University of Iowa sponsored events. If you are a person with a disability who requires an accommodation in order to participate in this program, please contact the Continuing Medical Education Division in advance at 319-335-8599.



University of Iowa Health Care
Department of Internal Medicine

Division of Immunology
200 Hawkins Drive C424 GH
Iowa City, Iowa 52242

CURRENT TOPICS IN
ALLERGY & CLINICAL IMMUNOLOGY



DRUG ALLERGY AND ALLERGY DRUGS



FRIDAY, OCTOBER 21, 2022

COURTYARD BY MARRIOTT
901 MELROSE AVE.
IOWA CITY, IOWA

PROVIDED BY
The University of Iowa
Roy J. and Lucille A. Carver College of Medicine
Department of Internal Medicine
Division of Immunology

→ internalmedicine.org

Changing Medicine.
Changing Lives.®

AGENDA

8:00 Registration and Breakfast

Morning Session Moderator: Benjamin Davis, MD, PhD (Co-course Director)

8:25 **Opening Remarks**
Benjamin Davis, MD, PhD

8:30 **Keynote: Management of Refractory Chronic Urticaria**
David Khan, MD | UT Southwestern Medical Center

9:30 **Updates in Drug Allergy**
Amy Dowden, MD and Deanna McDanel, PharmD

10:15 **Break**

10:30 **Biologic in Asthma**
Benjamin Davis, MD, PhD

11:15 **Dermatologic Drug Reactions**
John Selby, MD

12:00 **Concurrent Lunch Sessions**

A. Real-life Issues with Drug Delivery in Allergy
Kelly Hoenig, PharmD

B. Iowa Society of Allergy, Asthma & Immunology Business Meeting and Lunch (not accredited)

Afternoon Session Moderator: Diana Bayer, DO (Co-course Director)

1:15 **Jak Inhibitors in Allergy/Immunology**
Michell Lozano, MD

2:00 **Break**

2:15 **COVID-19 Infection, Vaccination, and Therapy in the Immunocompromised: Moving from Pandemic to Endemic**
Diana Bayer, DO

3:00 **Interesting Cases**
Alick Feng, MD and Sarah Nimri, MD

3:45 **Wrap-up, Evaluations, and Ending Remarks**

GENERAL INFORMATION

OVERVIEW

A day long allergy/immunology continuing medical education course for regional primary care providers, pediatricians, specialist, and any other practitioners treating patients with allergies and immunodeficiencies.

CONTINUING EDUCATION CREDIT

The University of Iowa Roy J. and Lucille A. Carver College of Medicine is accredited by the Accreditation Council for Continuing Medical Education (ACCME) to provide continuing medical education for physicians.

Physician: The University of Iowa Carver College of Medicine designates this live activity for a maximum of 6.0 AMA PRA Category 1 Credits™. Physicians should claim only the credit commensurate with the extent of their participation in the activity.

Nurse: Effective March 18, 2020, Iowa nurses may use participation in ACCME-accredited education toward their CE requirement for licensure. A certificate of participation will be available after successful completion of the course. (Nurses from other states should confirm with their licensing boards that this activity meets their state's licensing requirements.)

Other Provider: All other participants will receive a certificate of participation for this conference upon completion of the online evaluation. It is the responsibility of each attendee to determine if the continuing education programs they attend meet the requirements of their professional licensure board.

TARGET AUDIENCE

Specialties - Internal Medicine, Pediatrics

OBJECTIVES

Upon completion of this activity the learner should be able to:

- Discuss updates in the field of drug allergy
- Evaluate the new drug options in asthma, urticaria, eczema, and inborn errors of immunity.

- Recognize dermatologic manifestations of drug allergy
- Examine dermatologic presentations of drug reactions
- Summarize Drug Delivery issues of biologics in the field of allergy/immunology
- Explain current clinical uses and investigations of JAK inhibitors in the field of allergy/immunology
- Evaluate the new drug options in the setting of COVID and inborn errors of immunity
- Discuss unusual presentations of allergy/immunology diseases

LODGING

Courtyard by Marriott, 901 Melrose Avenue, Iowa City, Iowa. 319-579-6777 Participants are responsible for making their own reservations by calling the Courtyard by Marriott directly or visiting the Iowa City/Coralville Area Convention and Visitors Bureau (www.thinkiowacity.com) or any hotel in the Iowa City/Coralville area. Parking is available at the hotel at no charge.

REGISTRATION

All fees include registration, instruction and educational materials, CME and CEU recording, parking, continental breakfast, refreshment breaks and lunch.

Space is limited, we encourage early registration to enable us to provide the best possible service to participants.

- You must have a HawkID to receive UI affiliated rate
- A \$25 fee will be charged for canceled registrations. Fees will increase \$50 on October 1.

DISCLOSURE POLICY

University of Iowa Roy J. and Lucille A. Carver College of Medicine adheres to the ACCME's Standards for Integrity and Independence in Accredited Continuing Education. Any individuals in a position to control the content of a CE activity, including faculty, planners, reviewers or others are required to disclose all financial relationships with ineligible companies whose primary business is producing, marketing, selling, re-selling, or distributing healthcare products used by or on patients. All relevant financial relationships have been mitigated prior to the commencement of the activity.

REGISTRATION FORM

CURRENT TOPICS IN ALLERGY & CLINICAL IMMUNOLOGY

Name _____

Address _____

City _____ Primary Degree _____

State/Zip _____

Email _____ Specialty _____


Company or Business Name _____

Phone _____ (business) _____ (mobile)

REGISTRATION FEES/PAYMENT

- Physician (\$190)
- PA/Nurse Practitioner (\$125)
- Other Allied Health Professional (\$100)
- UI Physician/Adjunct/Retired (\$95)
- UI Allied Health/Nurse (\$85)
- Fellow/Resident/Student (\$50)
- Enclosed is a check made payable to The University of Iowa for \$ _____

TWO WAYS TO REGISTER

 **Online**
medicine.uiowa.edu/cme
click on Upcoming Programs

 **Mail**
University of Iowa
Carver College of Medicine
Continuing Medical Education
100 Medicine Administration Bldg
Iowa City, IA 52242

Please share challenging cases you've experienced and questions you wish to have addressed.

The University of Iowa requests this information for the purpose of processing your registration. No persons outside the University of Iowa are routinely provided this information.

EVENT SPEAKERS



BENJAMIN DAVIS, MD, PhD
Co-course Director | Clinical Assistant Professor
Department of Internal Medicine | Division of Immunology



DAVID KHAN, MD
Program Director, Allergy & Immunology Fellowship Program
UT Southwestern Medical Center | Internal Medicine Allergy & Immunology



AMY DOWDEN, MD
Clinical Associate Professor
Department of Internal Medicine | Division of Immunology



DEANNA MCDANEL, PharmD, BCPS, BCACP
Clinical Associate Professor
College of Pharmacy | Department of Pharmaceutical Care



JOHN SELBY, MD, PhD
Assistant Professor
Department of Dermatology



KELLY HOENIG, PharmD, BCPS
Clinical Pharmacy Specialist
Pharmacy Residency Program Director | Ambulatory Care



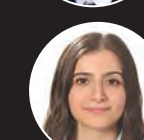
DIANA BAYER, DO
Immunologist | Clinical Associate Professor
Department of Pediatrics



MICHELL LOZANO, MD
Fellow, Allergy-Immunology Fellowship Program
Department of Internal Medicine | Division of Immunology



ALICK FENG, MD
Fellow, Allergy-Immunology Fellowship Program
Department of Internal Medicine | Division of Immunology



SARAH NIMRI, MD
Fellow, Allergy-Immunology Fellowship Program
Department of Internal Medicine | Division of Immunology

PLANNING COMMITTEE



BENJAMIN DAVIS, MD, PhD
Co-course Director | Clinical Assistant Professor
Department of Internal Medicine | Division of Immunology



AMY DOWDEN, MD
Co-course Director | Clinical Associate Professor
Department of Internal Medicine | Division of Immunology



ZUHAIR BALLAS, MD
Professor
Department of Internal Medicine | Division of Immunology



DIANA BAYER, DO
Immunologist | Clinical Associate Professor
Department of Pediatrics



MARY BETH FASANO, MD
Program Director, Allergy-Immunology Fellowship Program
Clinical Professor
Department of Internal Medicine | Division of Immunology



JENNIFER TWOMBLY, RN, BSN
Specialty Nurse
Adult Allergy/Immunology

CONNECT WITH US



[→ internalmedicine.org](http://internalmedicine.org)